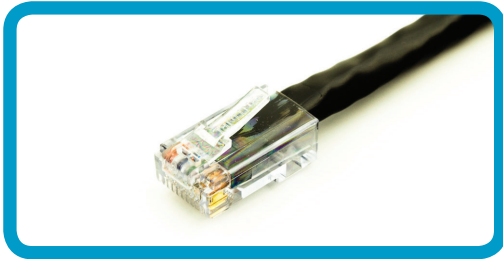


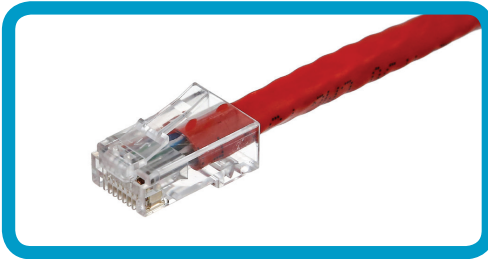
THE CLASSIC ROUND CABLE SERIES

CONNECTOR TYPES:



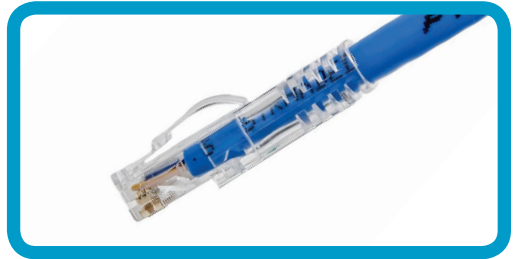
Sentinel

- USA Made cable
- Premium Sentinel® clear tab snagless molded RJ45 connectors



Clear RJ45

- Clear RJ45 connectors with clear boot
- Cat6 Plug 8P8C (3Up 5Down) for better performance









Arch Latch

- Unique design of arch latch RJ45 connectors with clear boot
- Prevent tangles and provide easy plug-in and release from patch panel

ALL CONNECTOR TYPES:

- 24AWG cable compliant with EIA/TIA-568-C.2
- Custom lengths available at 1/2 ft increments
- Service available for labeling and bundling cables
- 10 cable colors available: Black, Blue, Green, Grey, Orange, Pink, Purple, Red, White, and Yellow

PRODUCT COMBINATIONS:

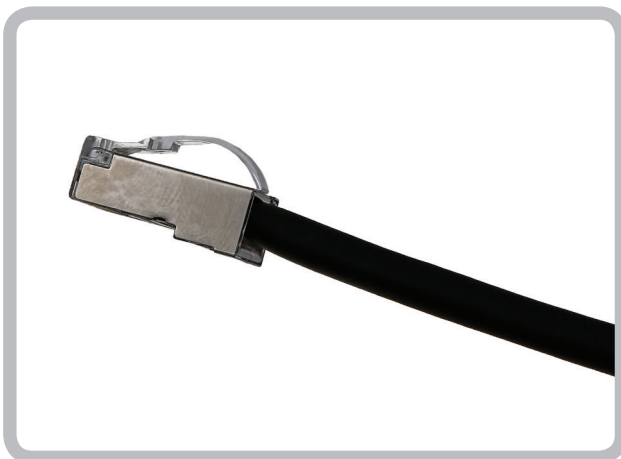
CONNECTOR	CAT6 & CAT5E with Boot (Snagless)	CAT6 & CAT5E No Boot (non-Snagless)
Sentinel	CAT6: MM-C6X-LLC CAT5E: MM-E5X-LLC 	CAT6: MM-C6X-LLC-NB CAT5E: MM-E5X-LLC-NB 
Arch Latch	CAT6: MM-C6X-LLA CAT5E: MM-E5X-LLA 	CAT6: MM-C6X-LLA-NB CAT5E: MM-E5X-LLA-NB 
Clear Type	CAT6: MM-C6X-LLD CAT5E: MM-E5X-LLD 	CAT6: MM-C6X-LLD-NB CAT5E: MM-E5X-LLD-NB 

CAT6 UTP 24AWG Rotatable Plug Patch Cord



- Innovative design of rotatable RJ45 plug allows 3 angled options
- Space saving & easy cable management
- 24AWG cable compliant with EIA/TIA-568-C.2
- Custom lengths available at 1/2 ft increments
- Service available for labeling and bundling cables
- 10 cable colors available: Black, Blue, Green, Grey, Orange, Pink, Purple, Red, White, and Yellow
- Rotatable plug can be used with CAT5E and CAT6 cables (24AWG to 26AWG, OD 5.0 to 7.5mm)

CAT5E STP 26AWG Arch Latch Plug Patch Cord



- Unique design of arch latch RJ45 connectors with clear boot
- Prevent tangles and provide easy plug-in and release from patch panel
- Shielded cable for better signal integrity and EMI performance
- Thinner and lighter 26AWG cable for easy routing
- Custom lengths available at 1/2 ft increments
- Service available for labeling and bundling cables